



1701 SW 41 Street  
Topeka, KS 66609  
Ph : (785) 266-4222

Kansas City Office:  
14955 W. 117th St.  
Olathe, KS 66062  
Ph: (913) 422-5300

Manhattan Office:  
555 Poyntz, Ste. 250  
Manhattan, KS 66503  
Ph: (785) 340-3918

**Change Request**

**To:** DANA GOULD  
SFS ARCHITECTURE  
1150 GRAND BLVD  
SUITE 400  
KANSAS CITY, MO 64106  
Ph: (816)474-1397 Fax: (816)421-8024

**Number:** 70  
**Date:** 3/27/20  
**Job:** 19050 Bonner Springs Govt Services  
**Phone:**

**Description:** RFI 180 City Hall: Dislocated Brick Panel

We are pleased to offer the following specifications and pricing to make the following changes:  
Salvage brick and rebuild affected panel

Description	Labor	Material	Equipment	Subcontract	Other	Price
RESTORATION WATERPROOFING				\$1,200.00		\$1,200.00
					Subtotal:	\$1,200.00
			Bond	\$1,200.00	1.00%	\$12.00
			KBS Sub Fee	\$1,200.00	15.00%	\$180.00
			KBS General Fee			\$0.00
					<b>Total:</b>	<b>\$1,392.00</b>

ACCEPTED

If you have any questions, please contact me at 785-266-4222.

Submitted by: DENNIS TANNER  
KBS CONSTRUCTORS, INC.

Reviewed by: Ryan Hagedorn, BDC  
Date Issued: April 9, 2020



1701 SW 41 Street  
 Topeka, KS 66609  
 Ph : (785) 266-4222  
 Kansas City Office:  
 14955 W. 117th St.  
 Olathe, KS 66062  
 Ph: (913) 422-5300

*RFI*

To: DIRK HENKE  
 SFS ARCHITECTURE  
 1150 GRAND BLVD  
 SUITE 400  
 KANSAS CITY, MO 64106  
 Ph: (816)474-1397 Fax: (816)421-8024

RFI #: 180  
 Date: 3/4/2020  
 Job: 19050 Bonner Springs Govt Services  
 Phone:

CC: DANA GOULD (SFS ARCHITECTURE)

Subject: City Hall: Dislocated Brick Panel

Drawing: N/A  
 Cost Impact: TBD

Spec Section:  
 Schedule Impact: TBD

**Request:**

**Date Required:**

North elevation above main front door, there is a brick panel between windows 1.06 and 1.07. This panel shows signs of being dislocated. Assumption would be to remove, salvage material, rebuild as existed. Please advise.

See attachment.

Requested by: VIRI RETANA-RODRIGUEZ  
 KBS CONSTRUCTORS, INC.

**Response:**

IT IS UNCLEAR FROM THE RFI WHAT IS MEANT BY 'DISLOCATED'.

IF THE BRICK IS BOWING OUTWARD, POST-INSTALLED BRICK TIES MAY BE UTILIZED TO SECURE THE PANEL IN PLACE. REFER TO ATTACHED PRODUCT DATA SHEETS. PRIORITY SHOULD BE GIVEN TO INSTALLING TIES THROUGH MORTAR JOINTS. REFER TO MASONRY RESTORATION SPECIFICATIONS FOR PATCHING OF THE BRICK IF TIES NEED TO BE INSTALLED THROUGH THE FACE OF THE UNITS.

IF THE BRICK IS DISLOCATED Laterally, SALVAGING BRICKS AND REBUILDING THE PANEL IS ACCEPTABLE.

- RYAN HAGEDORN / BDC / 2020-03-13
- DIRK HENKE / SFS / 2020-03-13
- DANA GOULD / SFS / 2020-03-13

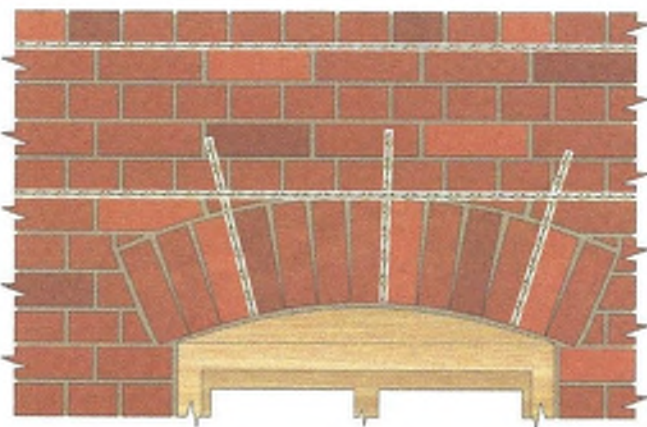
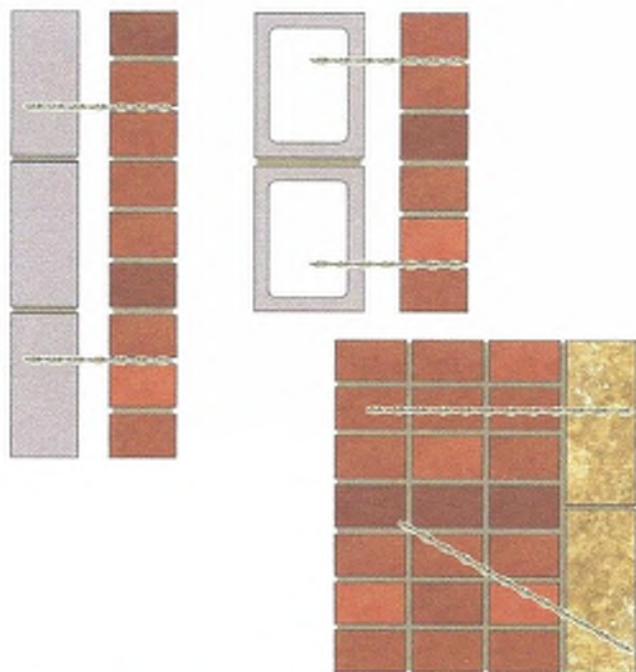
Answered by \_\_\_\_\_

Company \_\_\_\_\_

Date \_\_\_\_\_

## DryFix

Dry mechanical pinning and remedial tying system



For full Product Information, Case Studies and downloadable Repair Details, giving specifications for many common structural faults, go to:

[www.helifix.com/products/retrofit-products/dryfix](http://www.helifix.com/products/retrofit-products/dryfix)



## Applications

- Versatile replacement wall tie
- For securing multiple layers of masonry
- For pinning delicate masonry features

## Features

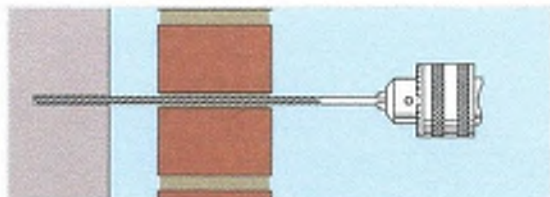
- Requires no resin, grout or mechanical expansion
- Quick, easy, non-disruptive installation using the Power Driver Attachment
- Installed tie is recessed below face of masonry
- Highly economical with low installed costs
- Effective in all common building materials
- Leaves masonry virtually unmarked
- Usable in all weather, temperature and environmental conditions



DryFix tie being power-driven into pilot hole

## Installation Procedures

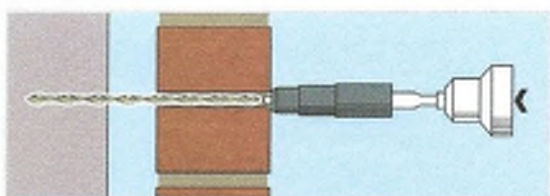
1. Mark the position for the DryFix tie on the facade.
2. Drill an appropriate diameter pilot hole (depending on density of backup material) through the facade and into the backup substrate, to predetermined depth, using a rotary percussion drill (3-jaw-chuck-type).
3. Fit the special DryFix PDA insertion tool to an electric hammer drill (SDS type).
4. Load the DryFix tie into the insertion tool.
5. Power-drive the tie into position until its outer end is recessed below the face of the mortar joint by the insertion tool.
6. Repair the entry hole with matching materials.



1. Drill small pilot hole using rotary percussion drill, 3-jaw-chuck type.  
 Note: When used in a joint, the mortar must be of sufficient strength and on-site testing of its suitability is essential.



2. Load tie into DryFix Power Driver Attachment fitted to SDS hammer drill



3. Drive in tie until outer end is fully recessed below face of masonry

## Technical Specifications

Material:	Austenitic stainless steel Grade 304 or 316
Diameter:	8mm (10mm available)
Length:	Facade thickness + cavity width + required penetration into the backup less required penetration of the PDA
Standard lengths:	155mm, 170mm, 195mm, 220mm, 245mm, 270mm, 295mm, 325mm and 350mm – in boxes of 50

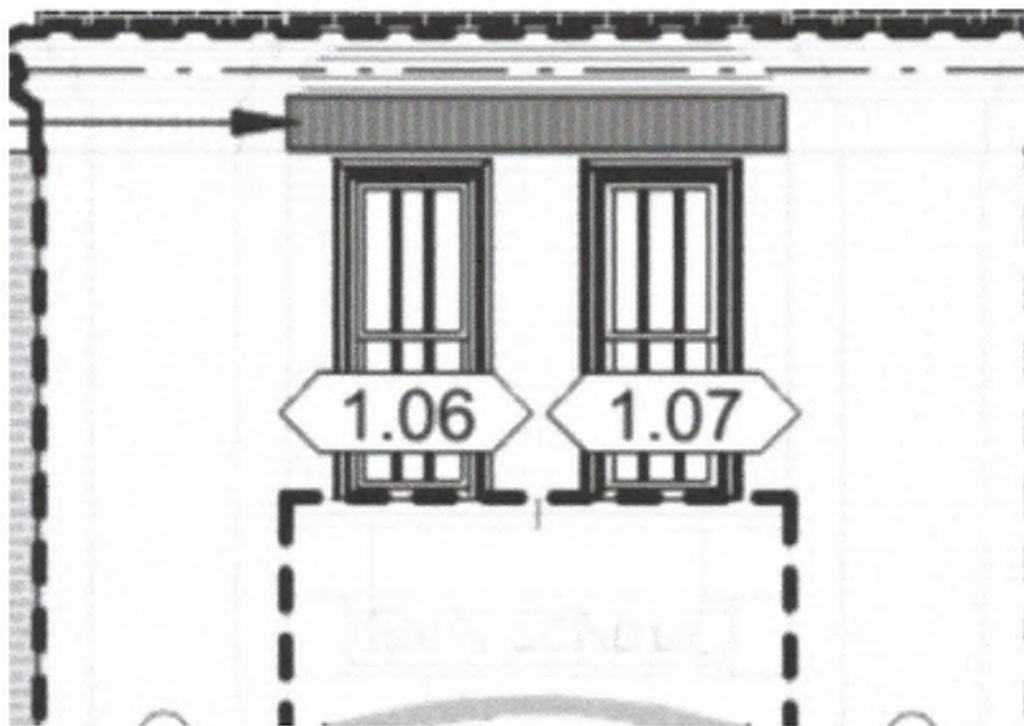
Depth of pilot hole:		Length of DryFix + 1"			
Facade Substrate	Backup Material	Near Wythe Pilot/ Clearance Hole	Far Wythe Pilot/ Clearance Hole	Penetration into Backup	Pull Out (Proof Load)
Clay Brick	Aircrete	5-6mm	None	3" - 3 1/2"	1.0kN
Clay Brick	Wood Stud	5-6mm	None	2"	1.2kN
Clay Brick	Clay Brick	5-6mm	5-6mm	2 1/2"	2.0kN
Clay Brick	Concrete Block	6mm	6mm	2"	2.0kN
Clay Brick	Concrete	6mm	6-6.5mm (very hard concrete may require an Asymmetric tie)	1 1/2"	2.0kN

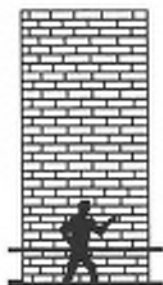
NOTE: All figures quoted are indicative dependent on the exact nature of the substrate. Testing should always be undertaken on site using the Helifix Load Test Unit. Compression Resistance should be checked with the Helifix Technical Department. Fixing Density should be calculated by the Helifix Technical Department

Minimum fixing density:	In accordance with project specification or check with Helifix Technical Department
Bonding agent:	None required

### RECOMMENDED TOOLING

For drilling pilot hole:	Rotary percussion 3-jaw-chuck drill
For installing DryFix tie:	Power Driver Attachment fitted to an electric hammer drill (SDS type).





# RESTORATION & WATERPROOFING CONTRACTORS, INC.

901 Scott Avenue ▲ Kansas City, Kansas 66105-1219 ▲ Telephone (913) 321-6226 ▲  
Fax (913) 321-6225

Bonner City Hall  
RFI 180  
03/27/2020

Center Brick Column

We will:

- Remove brick column.
- Clean brick for re-use.
- Lay brick column in place.

For the sum of: \$1,200.00

Leave column in place.

- Install Heli-fix pins per manufactures and design team instructions.
- Patch holes.

For the sum of: \$300.00

We feel the best option is to remove and relay the column.

ITEMIZED COSTS:		Bonner	Restoration and Waterproofing Contractors Inc											
RFI 180			3/27/2020											
WORK DESCRIPTION:	ITEM	UNIT	hrs/unit	LABOR TOTAL HRS	WAGE UNIT	LABOR COST	LABOR BURDEN	equip. cost	equip. total	material cost	material total	Equip/Mat. COST		
Manager/Supervision			0	1	0 \$ 36.00	\$ -	\$ -	\$ -	\$ -	\$ -	\$ -	\$ -		
Foreman			0	1	0 \$ 32.00	\$ -	\$ -	\$ -	\$ -	\$ -	\$ -	\$ -		
Bricklayer			10	1	10 \$ 30.00	\$ 300.00	\$ 135.00	\$ -	\$ -	\$ -	\$ -	\$ -		
labor			10	1	10 \$ 26.00	\$ 260.00	\$ 126.00	\$ -	\$ -	\$ -	\$ -	\$ -		
Pedestrian Control ???			0	0	0 \$ -	\$ -	\$ -	\$ -	\$ -	\$ -	\$ -	\$ -		
TESTING ???			0	0	0 \$ -	\$ -	\$ -	\$ -	\$ -	\$ -	\$ -	\$ -		
Material			0	0	0 \$ -	\$ -	\$ -	\$ -	\$ -	\$ -	\$ -	\$ -		
Mortar			5	0	0 \$ -	\$ -	\$ -	\$ -	\$ -	\$ 10.00	\$ 50.00	\$ -		
Rental Equipment			0	0	0 \$ -	\$ -	\$ -	\$ -	\$ -	\$ -	\$ -	\$ -		
Forklift			0	0	0 \$ -	\$ -	\$ -	\$ -	\$ -	\$ -	\$ -	\$ -		
Equipment			0	0	0 \$ -	\$ -	\$ -	\$ -	\$ -	\$ -	\$ -	\$ -		
Misc. TOOLS			0	0	0 \$ -	\$ -	\$ -	\$ 50.00	\$ -	\$ -	\$ -	\$ -		
Trucking lump sum (includes fuel)			0	0	0 \$ -	\$ -	\$ -	\$ 40.00	\$ -	\$ -	\$ -	\$ -		
Bobcat			0	0	0 \$ -	\$ -	\$ -	\$ 600.00	\$ -	\$ -	\$ -	\$ -		
powerwasher			0	0	0 \$ -	\$ -	\$ -	\$ -	\$ -	\$ -	\$ -	\$ -		
protection misc.			0	0	0 \$ -	\$ -	\$ -	\$ -	\$ -	\$ -	\$ -	\$ -		
filters			0	0	0 \$ -	\$ -	\$ -	\$ -	\$ -	\$ -	\$ -	\$ -		
fans			0	0	0 \$ -	\$ -	\$ -	\$ -	\$ -	\$ -	\$ -	\$ -		
PPE			0	0	0 \$ -	\$ -	\$ -	\$ -	\$ -	\$ -	\$ -	\$ -		
			16	0	0 \$ -	\$ -	\$ -	\$ 2.75	\$ 44.00	\$ -	\$ -	\$ -		
			0	0	0 \$ -	\$ -	\$ -	\$ -	\$ -	\$ -	\$ -	\$ -		
				TOTAL MAN HOURS		\$ 580.00	\$ 261.00	\$ -	\$ 44.00	\$ -	\$ 50.00	\$ -		
LABOR BURDEN Percentage:		45.00%		TOTAL COSTS:		\$ 935.00	(Labor Cost, Labor Burden, Material Cost, Equipment Cost, Miscellaneous Cost)							
				OH		\$ 140.25								
				PROFIT		\$ 161.29								
				SUBTOTAL:		\$ 1,236.54								
				Tax		\$ 0.00%								
				GRAND TOTAL:		\$ 1,236.54								

ITEMIZED COSTS:	Bonner		2/13/2018		Restoration and Waterproofing Contractors Inc									
WORK DESCRIPTION:	ITEM	UNIT	hrs/unit	man/	LABOR TOTAL/HRS	WAGE UNIT	LABOR COST	LABOR BURDEN	equip. cost	equip. total	material cost	material total	Equip/Mat. COST	
RFI 180														
Manager/Project supervision			0	0	0	\$ 38.00	-	-	-	-	-	-	-	
Foreman			0	0	0	\$ 32.00	-	-	-	-	-	-	-	
Bricklayer			0.5	1	0.5	\$ 30.00	15.00	6.75	-	-	-	-	-	
labor			0	0	0	\$ 43.95	-	-	-	-	-	-	-	
Pedestrian Control ???			0	0	0	-	-	-	-	-	-	-	-	
TESTING ???			0	0	0	-	-	-	-	-	-	-	-	
Material			0	0	0	-	-	-	-	-	-	-	-	
Helifix			20	0	0	-	-	-	-	-	10.00	200.00	-	
			0	0	0	-	-	-	-	-	-	-	-	
Rental Equipment			0	0	0	-	-	-	-	-	-	-	-	
Forklift			0	0	0	-	-	-	-	-	-	-	-	
Equipment			0	0	0	-	-	-	-	-	-	-	-	
Misc. TOOLS			0	0	0	-	-	-	-	-	-	-	-	
truckling lump sum (includes fuel)			0	0	0	-	-	-	-	-	-	-	-	
Bobcat			0	0	0	-	-	-	-	-	-	-	-	
powerwasher			0	0	0	-	-	-	-	-	-	-	-	
protection misc.			0	0	0	-	-	-	-	-	-	-	-	
filters			0	0	0	-	-	-	-	-	-	-	-	
fans			0	0	0	-	-	-	-	-	-	-	-	
PPE			0	0	0	-	-	-	-	-	-	-	-	
			4	0	0	-	-	-	2.75	11.00	-	-	-	
			0	0	0	-	-	-	-	-	-	-	-	
TOTAL MAN HOURS					0.5		15.00	6.75		11.00		200.00		
LABOR BURDEN PERCENTAGE:	45.00%													
TOTAL COSTS:								232.75	(Labor Cost, Labor Burden, Material Cost, Equipment Cost, Miscellaneous Cost)					
OH								34.91						
PROFIT								40.15						
SUBTOTAL:								307.81						
Tax								-						
GRAND TOTAL:								307.81						