



1701 SW 41 Street
Topeka, KS 66609
Ph : (785) 266-4222

Kansas City Office:
14955 W. 117th St.
Olathe, KS 66062
Ph: (913) 422-5300

Manhattan Office:
555 Poyntz, Ste. 250
Manhattan, KS 66503
Ph: (785) 340-3918

Change Request

To: DANA GOULD
SFS ARCHITECTURE
1150 GRAND BLVD
SUITE 400
KANSAS CITY, MO 64106
Ph: (816)474-1397 Fax: (816)421-8024

Number: 52
Date: 2/17/20
Job: 19050 Bonner Springs Govt Services
Phone:

Description: Police Facility: RFI 126 - Trench Drain Reinforcement

We are pleased to offer the following specifications and pricing to make the following changes:

Furnish and Install:

Trench drain reinforcement per detail provided by Structural Engineer.

Description	Labor	Material	Equipment	Subcontract	Other	Price
CROOKHAM				\$834.00		\$834.00
					Subtotal:	\$834.00
			Bond	\$834.00	1.00%	\$8.34
			KBS Sub Fee	\$834.00	15.00%	\$125.10
			KBS General Fee			\$0.00
					Total:	\$967.44

If you have any questions, please contact me at .

Submitted by: TODD MANSON
KBS CONSTRUCTORS, INC.

Reviewed by: Dana Gould, SFS
Date: 02/ 20/2020



1701 SW 41 Street
Topeka, KS 66609
Ph : (785) 266-4222
Kansas City Office:
14955 W. 117th St.
Olathe, KS 66062
Ph: (913) 422-5300

RFI

To: DAVID FOLSOM
SFS ARCHITECTURE
1150 GRAND BLVD
SUITE 400
KANSAS CITY, MO 64106
Ph: (816)474-1397 Fax: (816)421-8024

RFI #: 126
Date: 12/6/2019
Job: 19050 Bonner Springs Govt Services
Phone:

CC: DANA GOULD (SFS ARCHITECTURE)

Subject: Police Facility: Rebar Detail At Trench Drains in Sally Port

Drawing: N/A

Spec Section:

Cost Impact: TBD

Schedule Impact: TBD

Request:

Date Required:

Per submittal 221300-001 Sanitary Drainage, page 50 of 54 states, "Specifying engineer is responsible for concrete encasement and reinforcing based upon application and local codes". Per the plans a detail(s) cannot be found referencing the reinforcement and concrete encasement at the trench drains located in the Sally Port. Please advise.

See attached.

Requested by: VIRI RETANA-RODRIGUEZ
KBS CONSTRUCTORS, INC.

Response:

Please see the sheets provided by the Structural engineer of record for reinforcing.

David Folsom, SFS Architecture, 12/6/2019

Answered by

Company

Date



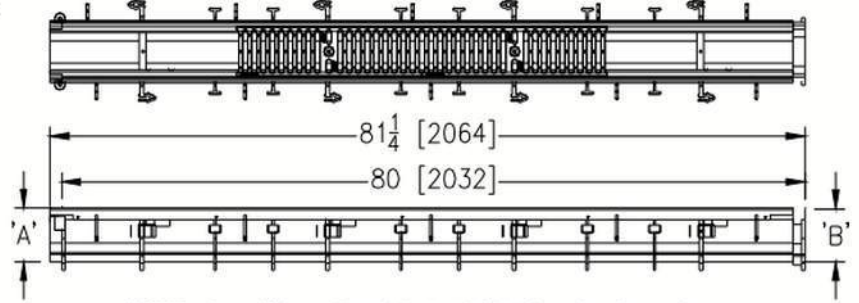
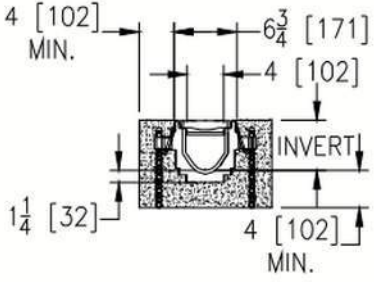
Z886-HD

6-3/4 [171] WIDE REVEAL TRENCH DRAIN SYSTEM
WITH HEAVY-DUTY FRAME ASSEMBLY

SPECIFICATION SHEET
TAG **TD**

Dimensional Data (inches and [mm]) are Subject to Manufacturing Tolerances and Change Without Notice

SPECIFYING ENGINEER IS RESPONSIBLE FOR CONCRETE ENCASEMENT AND REINFORCING BASED UPON APPLICATION AND LOCAL CODES



NOTE: + Actual Channel length is 81 1/4 [2064] to allow for overlap.



BONNER SPRINGS GOVERNMENT SERVICES CENTER - POLICE FACILITY
 CITY OF BONNER SPRINGS, KANSAS
 200 E 3RD ST.
 BONNER SPRINGS, KS 66012

MAR.	DATE	DESCRIPTION
2	12/6/19	RFI-126

SFS PROJECT NO: 17973
 ISSUED FOR: BID DOCUMENTS
 ISSUE DATE: 02/22/2019
 © 2018 SFS ARCHITECTURE
OPERATIONS LEVEL - FOUNDATION PLAN

S101

MARK	DESCRIPTION
RD-1	1 1/2" DEEP 22ga GALVANIZED WIDE RIB ROOF DECK (EXAMPLE: VULCRAFT 1.5B22). PROVIDE 5/8"Ø PUDDLE WELDS TO SUPPORTS IN 36/4 PATTERN (@ 12"o.c. FOR SUPPORTS PARALLEL TO DECK SPAN) AND #10 TEK SCREW SIDE LAP FASTENERS TO DEVELOP 350psi DIAPHRAGM SHEAR.
CD-1	5" CONCRETE SLAB: 3" CONCRETE ON 2"DP - 18ga GALVANIZED COMPOSITE METAL DECK. REINFORCE SLAB W/ 6x6-W2.1xW2.1 WWF
SOG-1	4" CONCRETE SLAB ATOP 15 MIL VAPOR BARRIER ATOP 4" FREE-DRAINING COMPACTED GRANULAR LEVELING COURSE OVER 20" COMPACTED LOW-VOLUME CHANGE MATERIAL (PER GEOTECHNICAL REPORT). REINFORCE SLAB W/ #3 @ 16"o.c. EACH WAY. T/SLAB ELEVATION PER PLAN.
SOG-2	5" CONCRETE SLAB ATOP 15 MIL VAPOR BARRIER ATOP 4" FREE-DRAINING COMPACTED GRANULAR LEVELING COURSE OVER 20" COMPACTED LOW-VOLUME CHANGE MATERIAL (PER GEOTECHNICAL REPORT). REINFORCE SLAB W/ #3 @ 16"o.c. EACH WAY. T/SLAB ELEVATION PER PLAN.

NOTES:
 1. CD = CONCRETE DECK TYP.
 2. SOG = SLAB-ON-GRADE TYP.
 3. RD = ROOF DECK TYP.

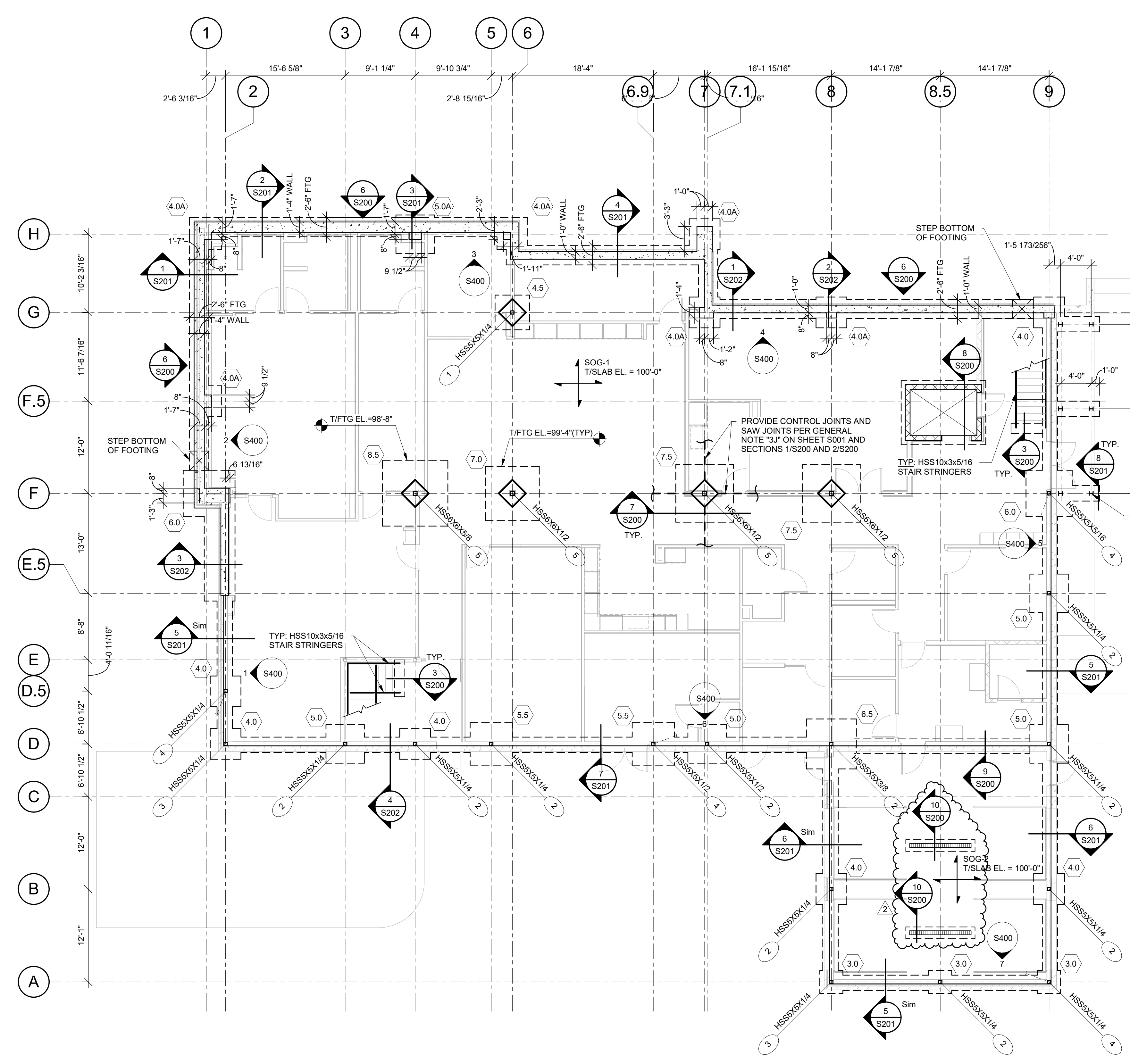
NOTE: ALL EXTERIOR STEEL FOR WALKWAY AND STAIRS TO BE GALVANIZED

W6x20 COLUMN WITH TYPE "9" BASE PLATE AND ANCHORS (SEE SCHEDULE ON SHEET S004. (6 THUS))

LEGEND:

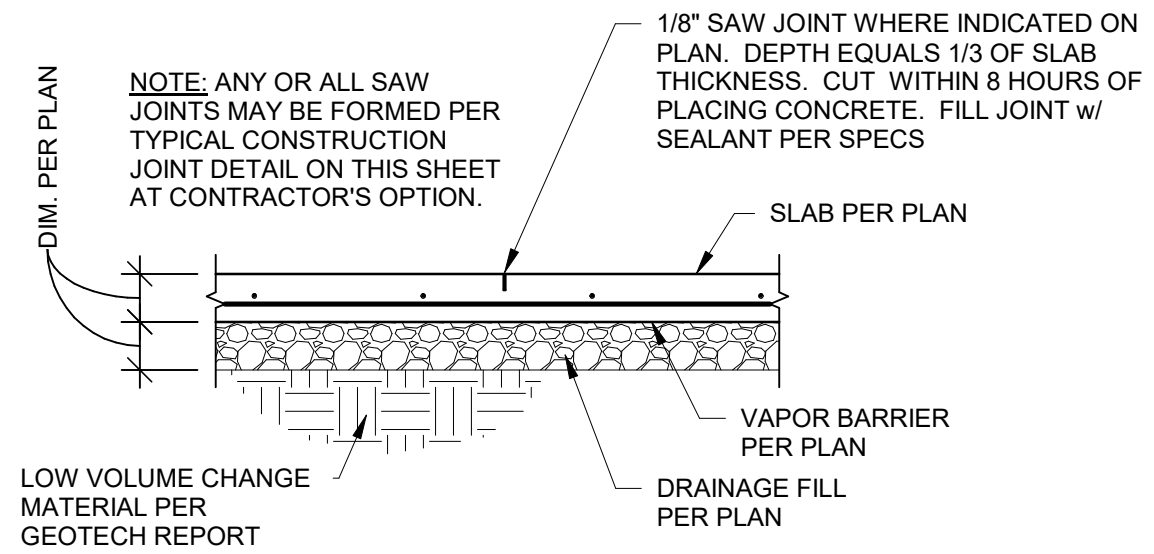
- SPAN DIRECTION OF DECK
- FOOTING MARK - SEE SCHEDULE ON SHEET S004.
- HSS 8"x8"x5/16"..... COLUMN SIZE
- BASE PLATE MARK - SEE SCHEDULE ON SHEET S004
- MOMENT CONNECTION (DESIGN FOR FULL MOMENT CAPACITY OF BEAM AT CANTILEVERED BEAMS U.N.O.)
- EP-#..... EMBED PLATE MARK. SEE SCHEDULE ON SHEET S004

COMPOSITE BEAM DESIGNATION	W18x35 (16) c=3/4"	BEAM CAMBER
		NUMBER OF 3/4"Ø x 3 1/2" LONG SHEAR STUDS
		STEEL BEAM SIZE
LEVEL BEAM DESIGNATION	W14x22	STEEL BEAM SIZE
	T 117'-6"	TOP OF BEAM ELEVATION
SLOPING BEAM DESIGNATION	W14x22	STEEL BEAM SIZE
	T 132'-5"	TOP OF BEAM ELEVATION EACH END

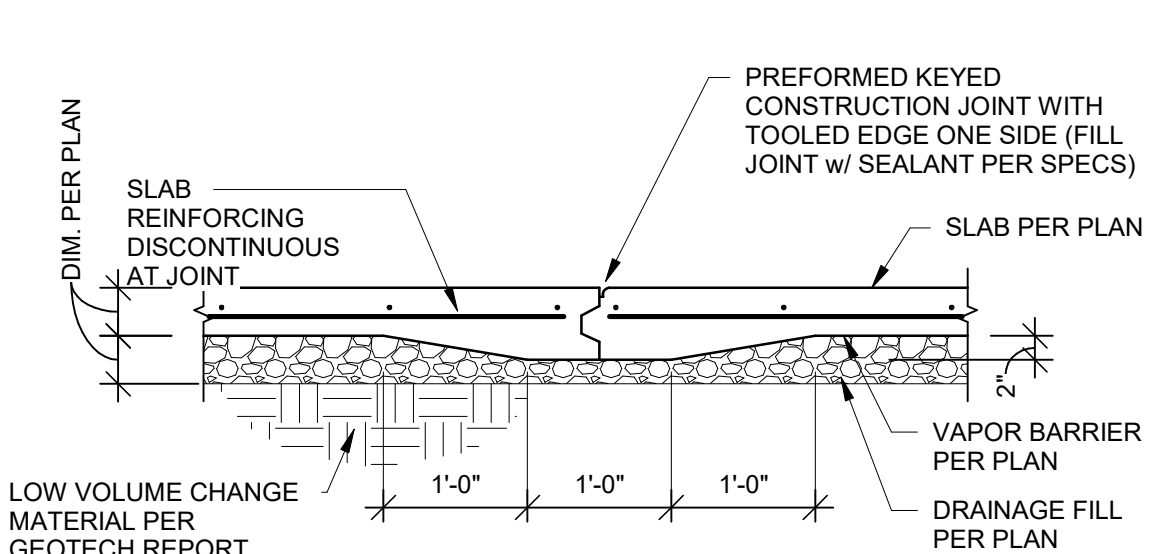


1 FOUNDATION PLAN - OPERATIONS LEVEL

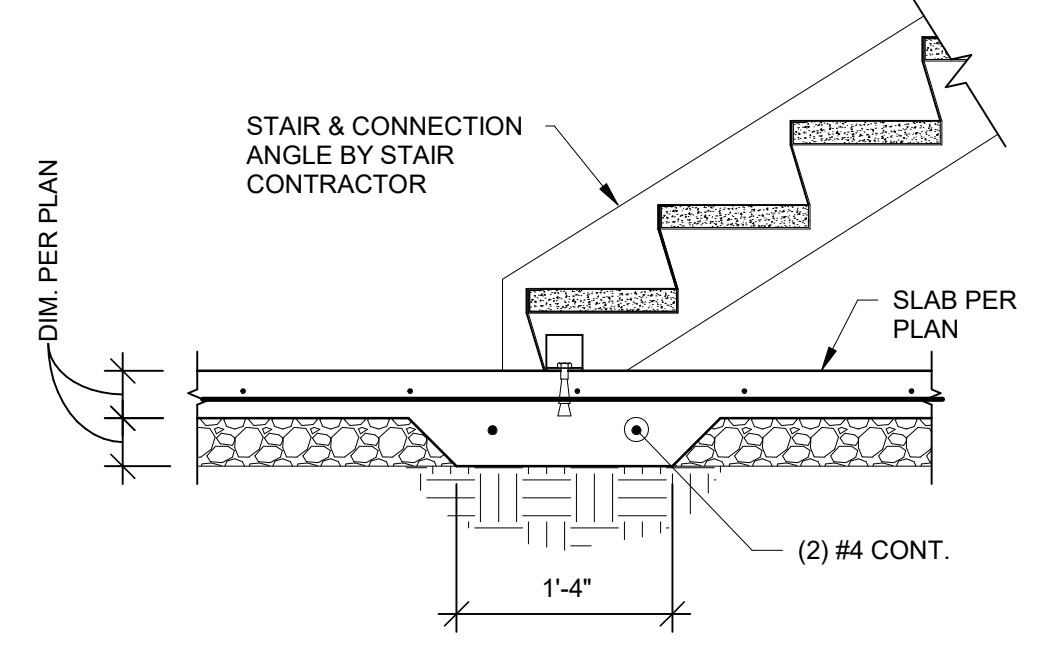
1/8" = 1'-0"
 NOTES:
 1. REFER TO GENERAL NOTES ON SHEET S001
 2. REFER TO SCHEDULE ON SHEET S004
 3. VERIFY ALL DIMENSIONS AND ELEVATIONS WITH ARCHITECTURAL DRAWINGS



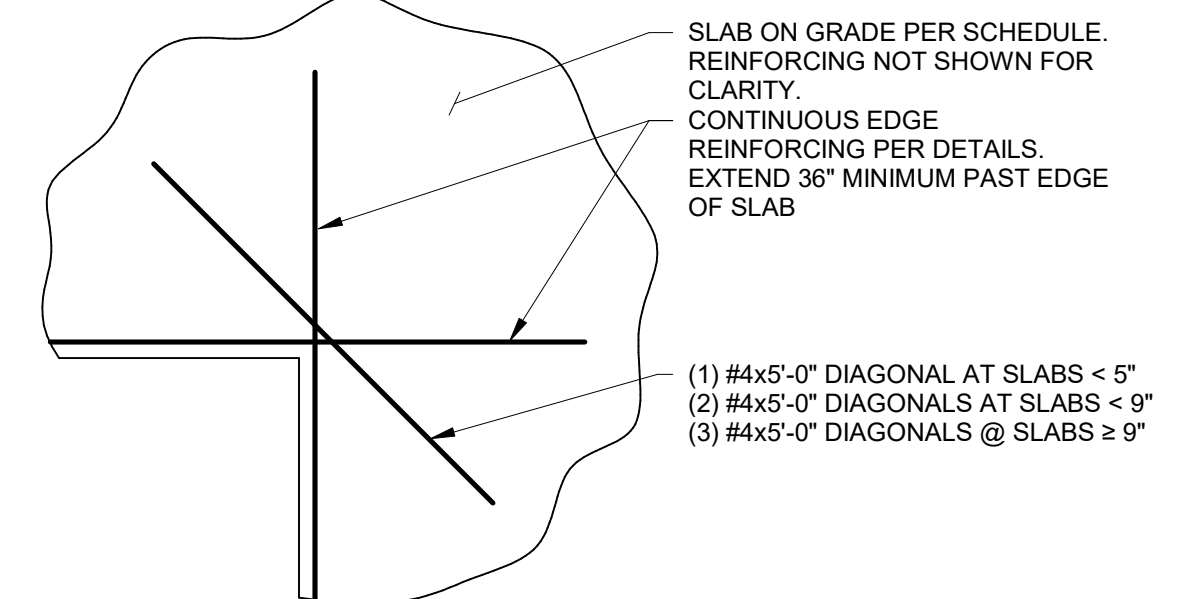
1 SECTION
3/4" = 1'-0"



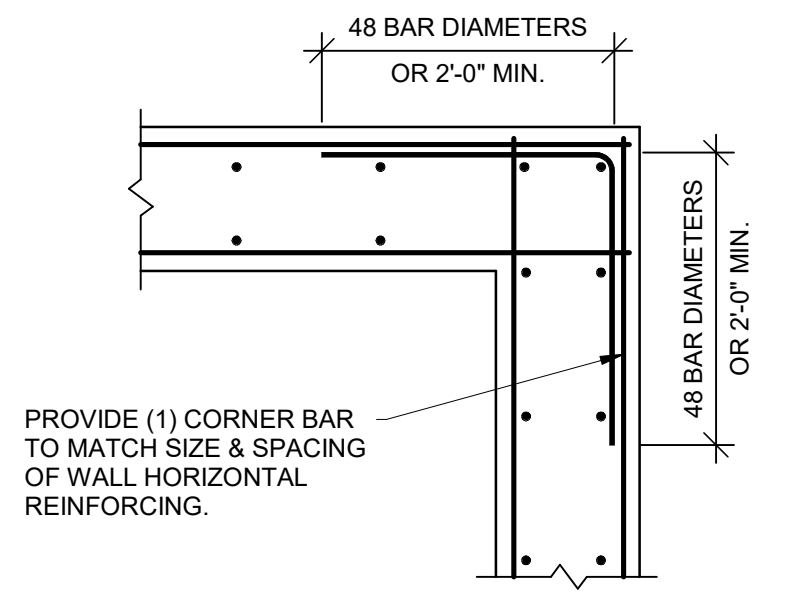
2 SECTION
3/4" = 1'-0"



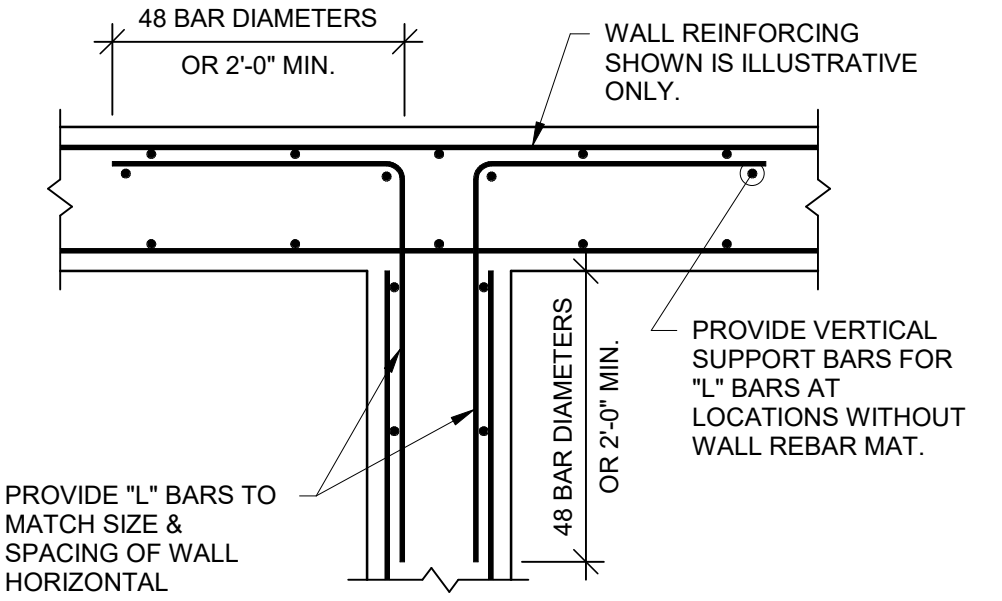
3 SECTION
3/4" = 1'-0"



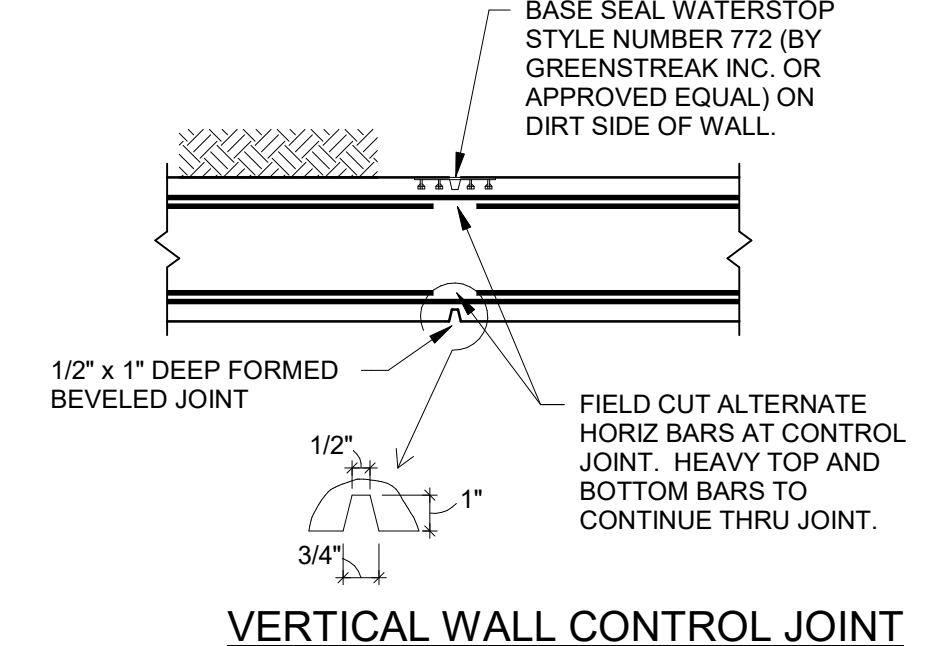
4 DETAIL
1/2" = 1'-0"



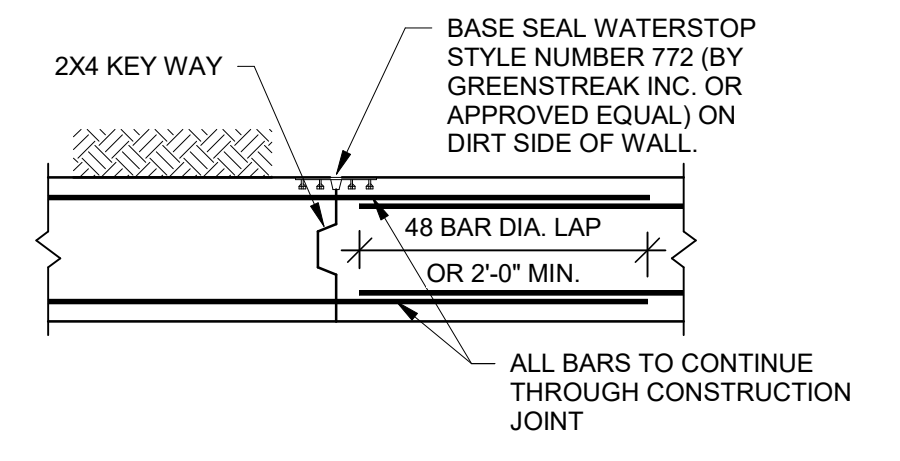
5 TYPICAL CORNER BARS AT CONCRETE WALLS & FOUNDATIONS
3/4" = 1'-0"



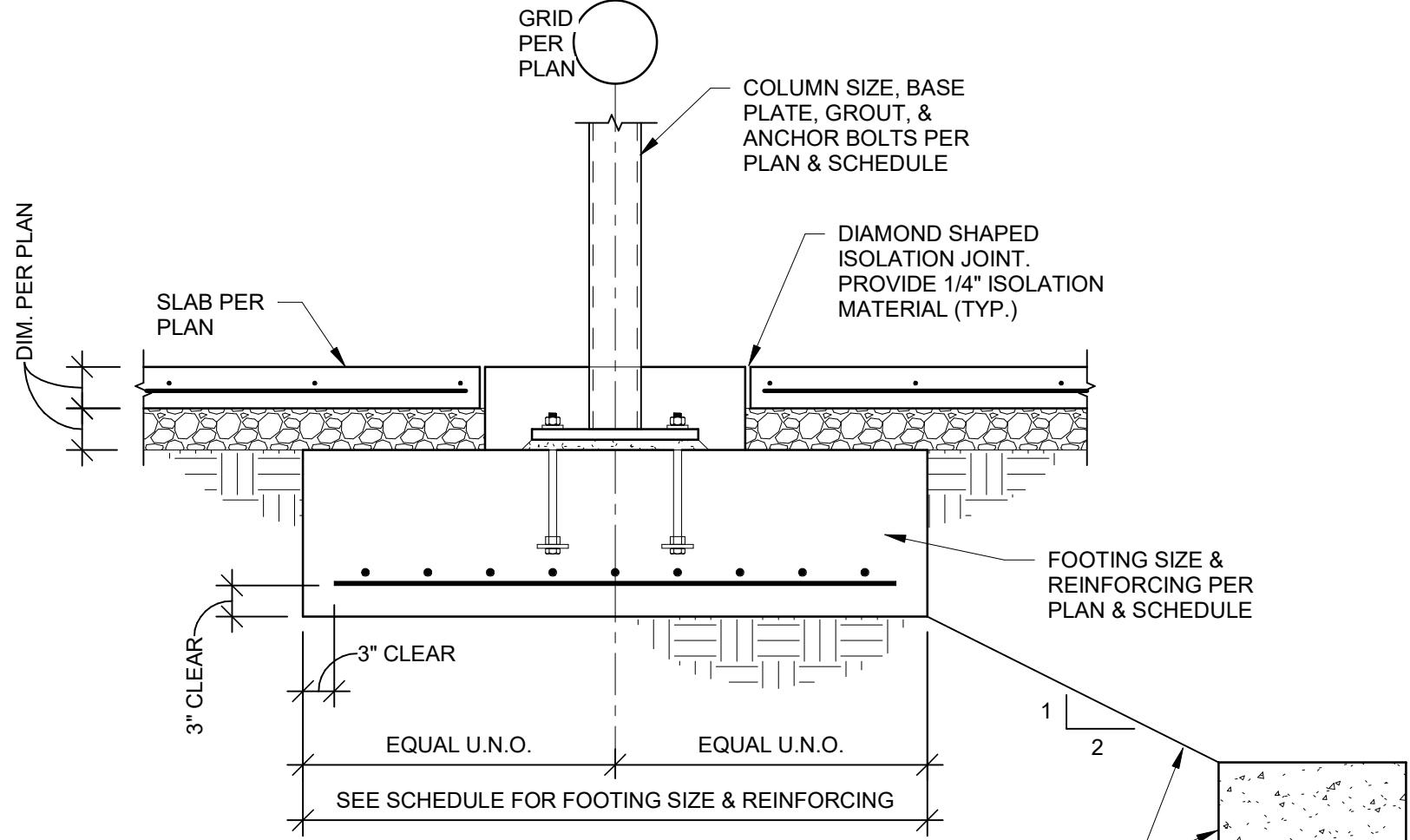
6 TYPICAL T-INTERSECTION REINFORCING AT CONCRETE WALLS & FOUNDATIONS
3/4" = 1'-0"



7 VERTICAL WALL CONTROL JOINT
3/4" = 1'-0"



8 VERTICAL WALL CONSTRUCTION JOINT
3/4" = 1'-0"

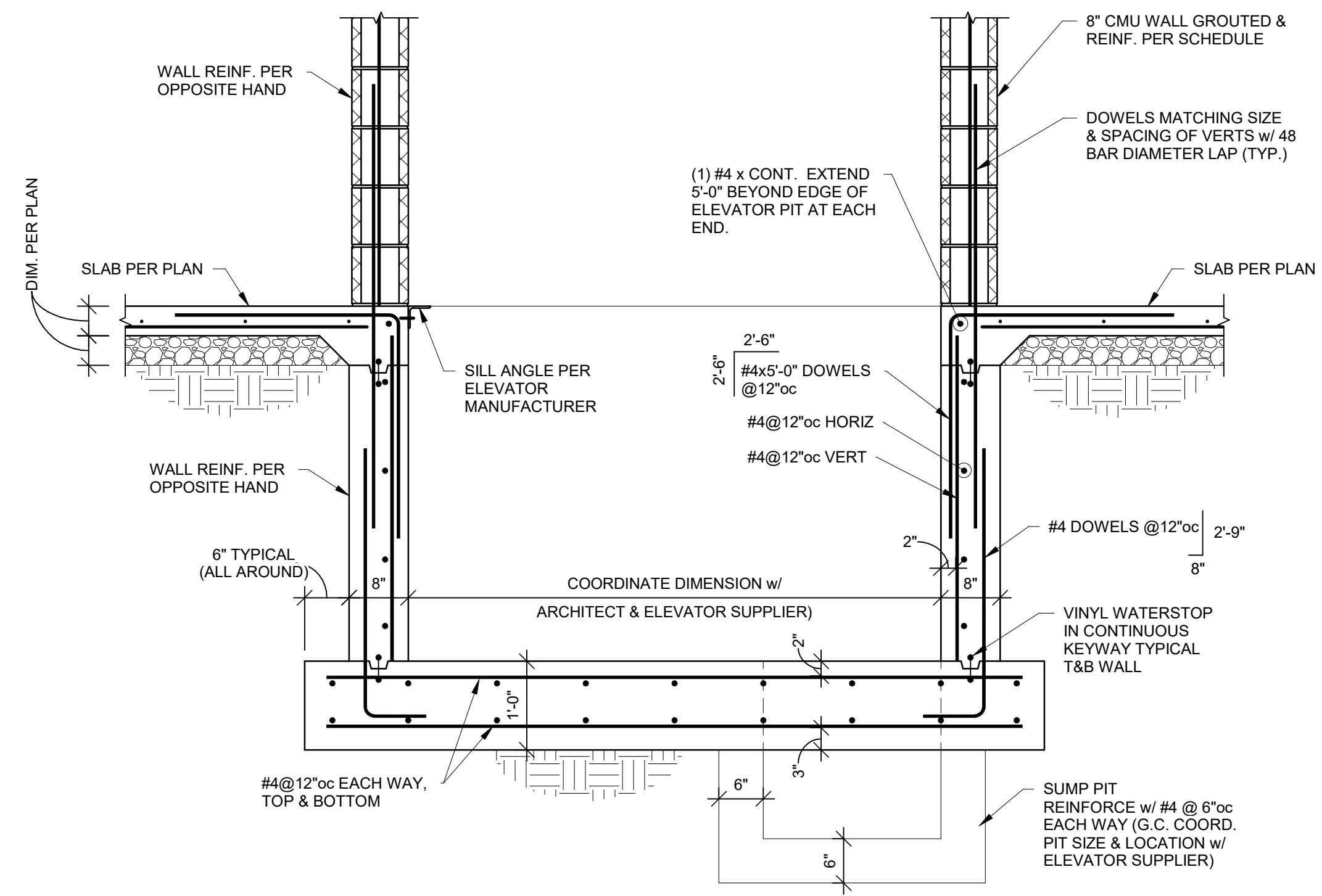


9 TYPICAL INTERIOR COLUMN FOOTING
3/4" = 1'-0"

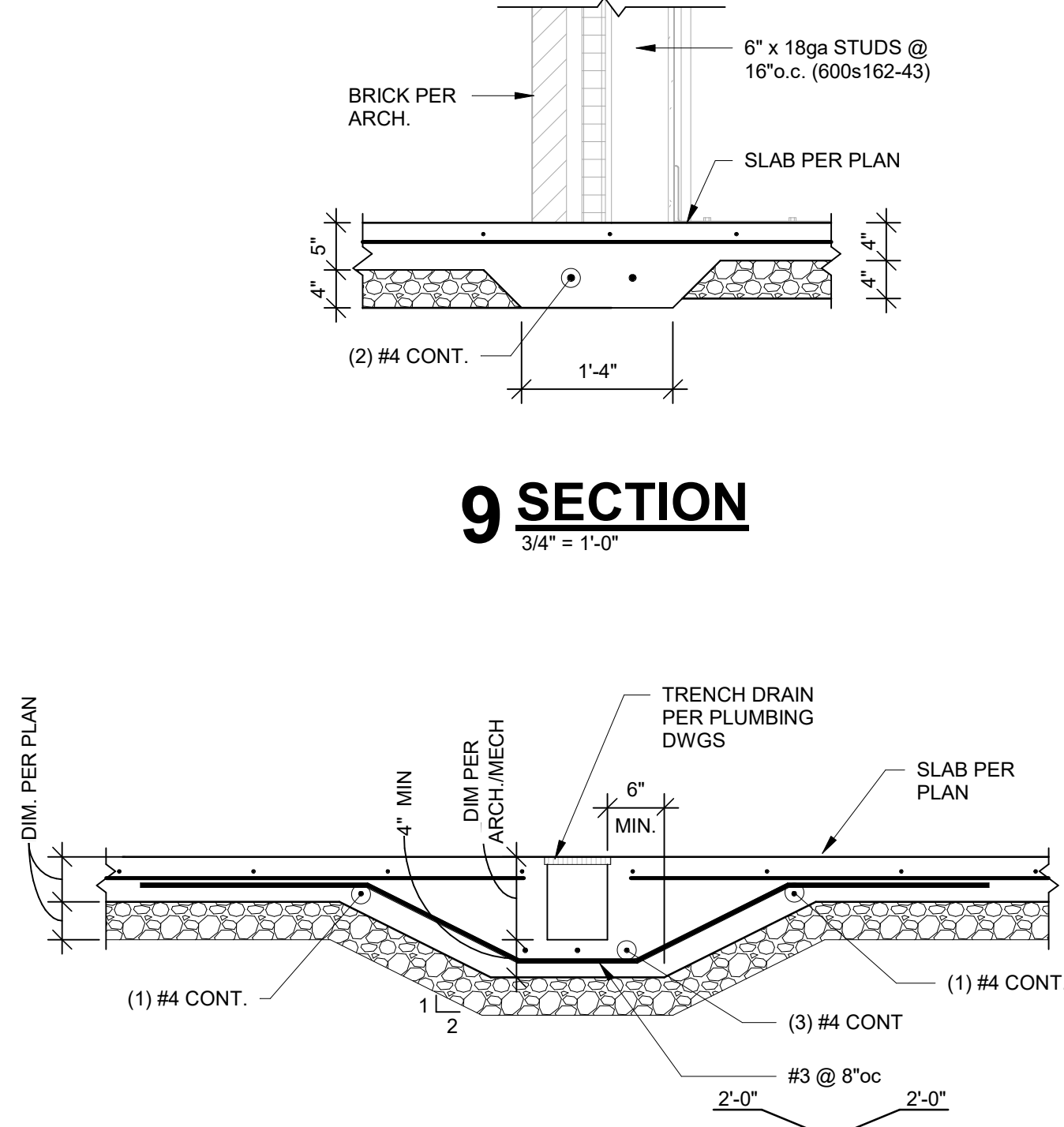
5 TYPICAL INTERSECTING CONCRETE WALL REINFORCING

6 VERTICAL WALL CONTROL JOINT

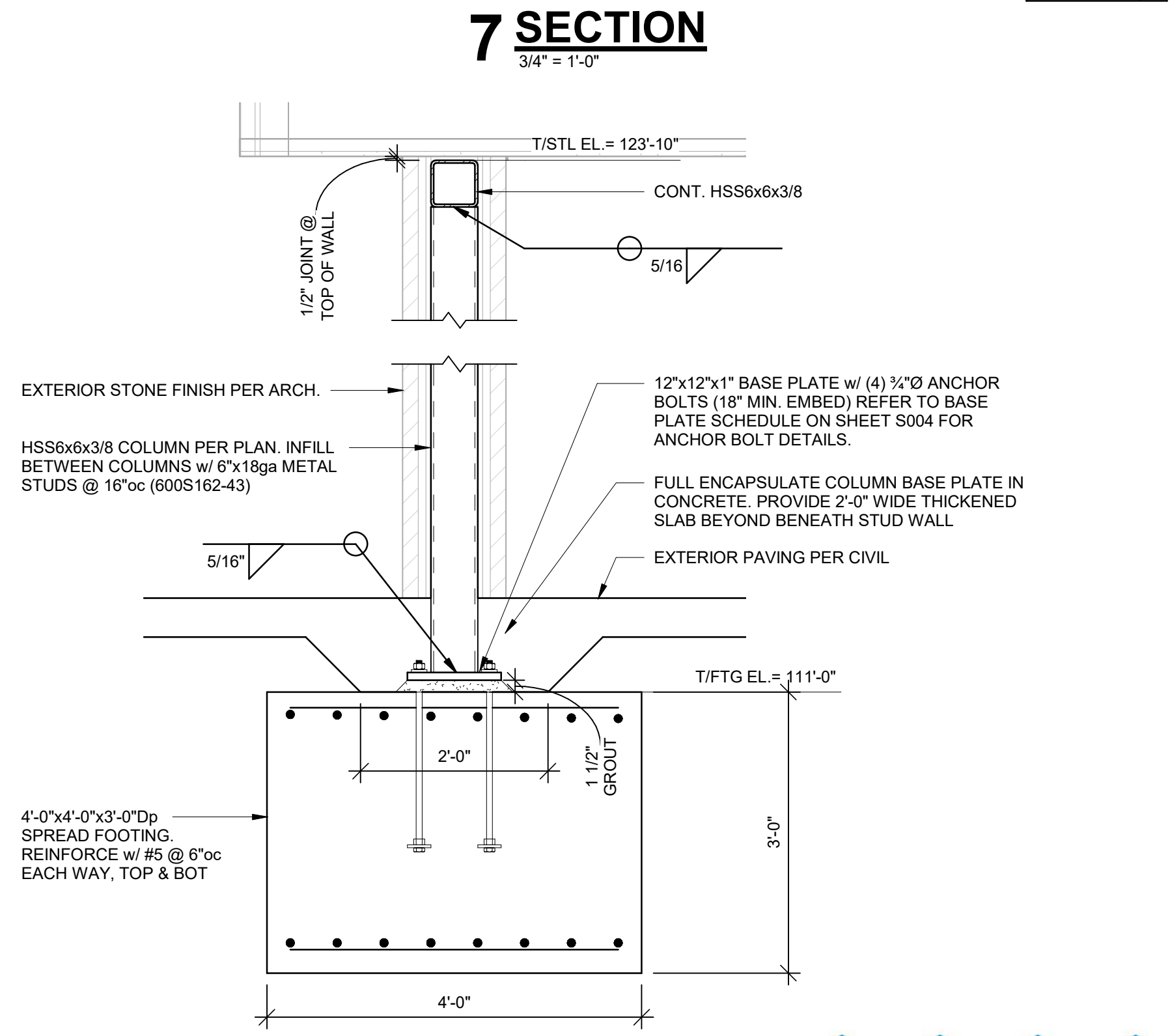
7 SECTION



10 SECTION
3/4" = 1'-0"



11 SECTION
3/4" = 1'-0"



12 SECTION
3/4" = 1'-0"



BONNER SPRINGS GOVERNMENT SERVICES CENTER - POLICE FACILITY
CITY OF BONNER SPRINGS, KANSAS
200 E. 3RD ST.
BONNER SPRINGS, KS 66012

REV.	DATE	DESCRIPTION
1	12/8/19	RFI-114
2	12/8/19	RFI-126

SFS PROJECT NO: 17973
ISSUED FOR: BID DOCUMENTS
ISSUE DATE: 02/22/2019
© 2018 SFS ARCHITECTURE

FOUNDATION SECTIONS
S200

BOB D. CAMPBELL & CO.
Structural Engineers Since 1957
4338 Bellevue Ave. 816.531.4144
Kansas City, MO 64111 www.bdc-enrgs.com



KANSAS & MISSOURI WBE/DBE CERTIFIED

DATE: February 14, 2020

RE: RFI 126 BSGSC

Crookham Construction, LLC. Proposes the following scope of work change on the above referenced project.

Provide Labor and Materials to construct the following work associated with RFI 126:

Supply and placement of concrete leveling pad for trench drain
Supply and placement of rebar around trench drain
Supply and placement of concrete around trench drain

Estimate: \$ 834.00

Labor: \$275.00
Materials: \$420.00
P&O: \$139.00

Exclusions:

Bonds and Permits
Testing / special inspections
All prior exclusions previously listed
Winter Protection of concrete or substrate
Winter sur-charges for concrete materials
Site De-watering
Trench drain materials or placement
Traffic Control
Supply and placement of sleeves or block-outs, or core drilling for handrail, fence post, etc.
Layout for other crafts
NCA additives in any slab concrete
Removal of concrete spoils from site
Demo
**All concrete work and concrete materials other than what is stated in the above scope of work