



1701 SW 41 Street
Topeka, KS 66609
Ph : (785) 266-4222

Kansas City Office:
14955 W. 117th St.
Olathe, KS 66062
Ph: (913) 422-5300

Manhattan Office:
555 Poyntz, Ste. 250
Manhattan, KS 66503
Ph: (785) 340-3918

Change Request

To: DANA GOULD
SFS ARCHITECTURE
1150 GRAND BLVD
SUITE 400
KANSAS CITY, MO 64106
Ph: (816)474-1397 Fax: (816)421-8024

Number: 107
Date: 6/29/20
Job: 19050 Bonner Springs Govt Services
Phone:

Description: City Hall: Additional speakers at A5/545 transaction window

We are pleased to offer the following specifications and pricing to make the following changes:

Furnish and install 2 additional N666 speakers at room 214 transaction windows. Add was made via the reviewed shop drawings.

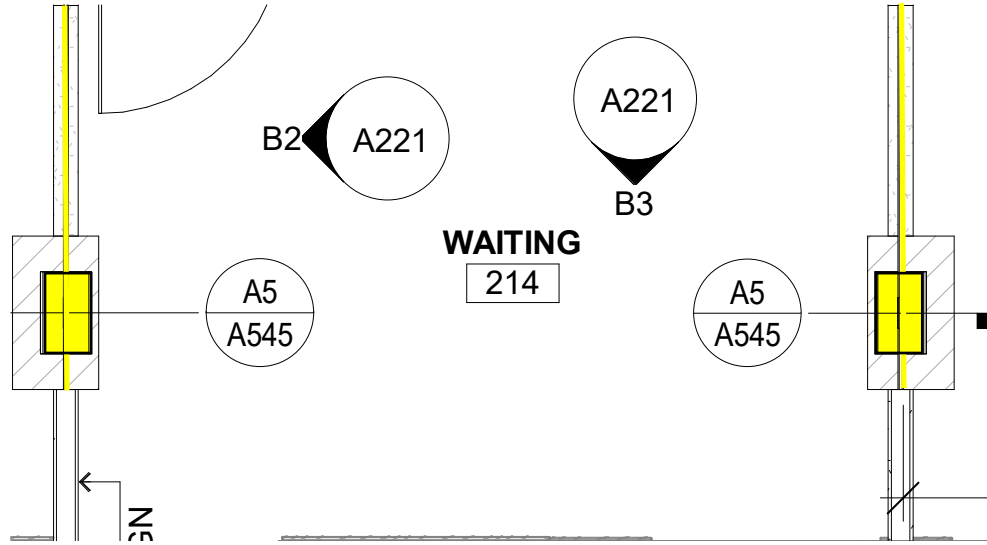
Description	Labor	Material	Equipment	Subcontract	Other	Price
BYERS				\$829.77		\$829.77
					Subtotal:	\$829.77
			Bond	\$829.77	1.00%	\$8.30
			KBS Sub Fee	\$829.77	15.00%	\$124.47
			KBS General Fee			\$0.00
					Total:	\$962.54

ACCEPTED

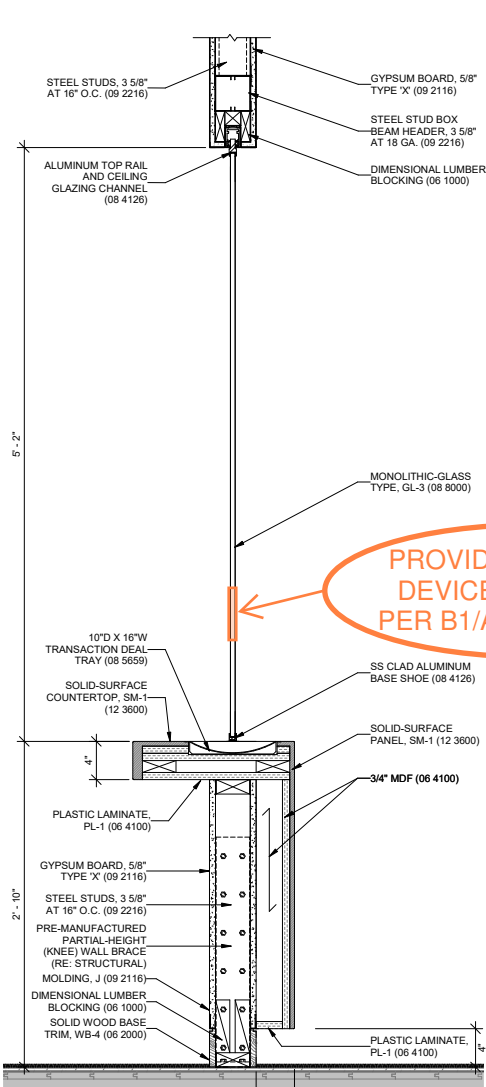
If you have any questions, please contact me at 785-266-4222.

Submitted by: DENNIS TANNER
KBS CONSTRUCTORS, INC.

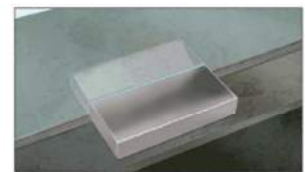
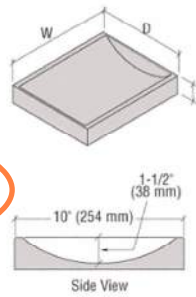
Reviewed by: Dana Gould, SFS
Date: July 7, 2020



Field Verify



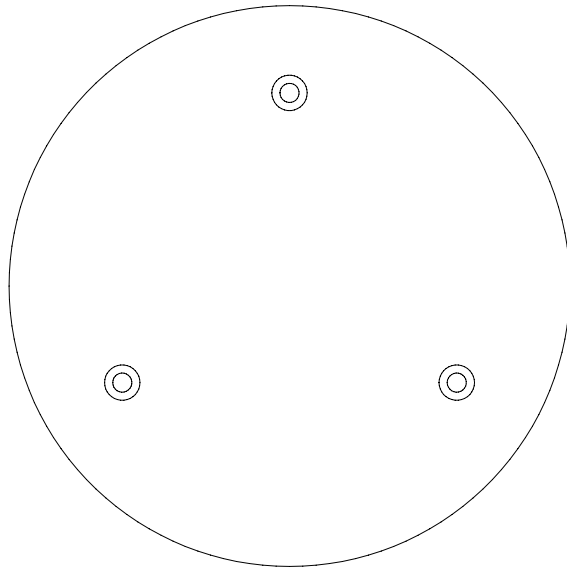
CRL CTDB16
16"W x 10"D
Brushed Stainless



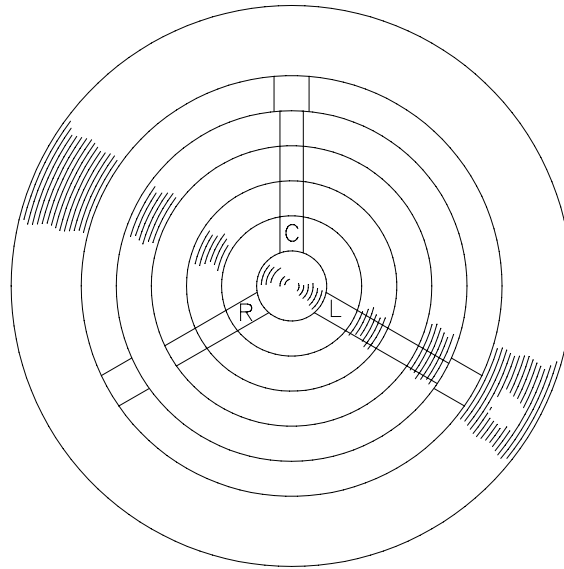
PROVIDE SPEAK-THRU DEVICE AT 4'-0" A.F.F. PER B1/A221 AND B2/221

A5 DETAIL AT SECOND FLOOR TRANSACTION LEDGE
1 1/2" = 1'-0"

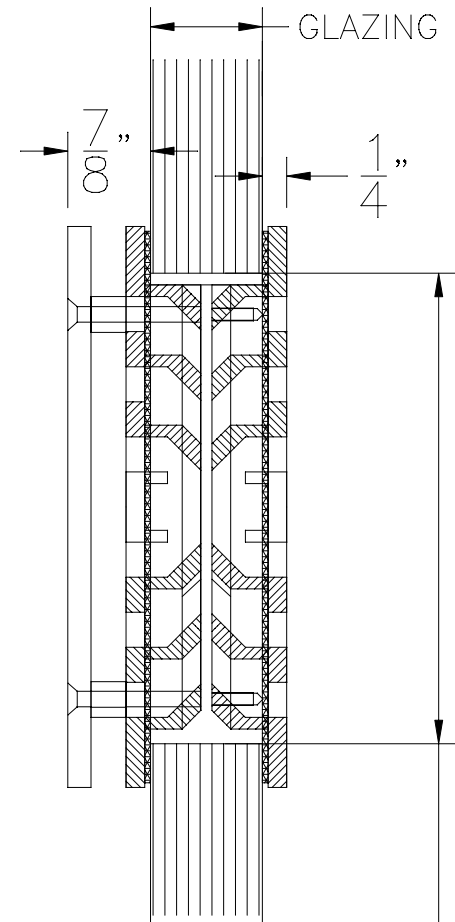
P/N N666 - 6" ROUND BULLET RESISTANT SPEAK - THRU



CLERK SIDE



CUSTOMER SIDE



5.000
CLEARANCE HOLE IN GLASS



Topeka: 785.266.4222
Olathe: 913.422.5300
Manhattan: 785.340.3916
kbsci.com

Bonner Springs Government Services Center
COR107 Sub/ Supplier Pricing

-Byers Glass: Pages 1-2



Byers Glass and Mirror, Inc.
 P.O. Box 291
 Bonner Springs, KS 66012
 Phone 913-441-8717
 Fax 913-441-0157

Potential Change Order Request

162 — Bonner Springs Police and City Hall

PCO Subject: Adding (2) speaker holes

To Dennis Tanner
 KBS Constructors
 14955 W 117th St,
 Olathe, KS 66062
 913-422-5300

PCO Number: 162-13
PCO Revision Number: 0
 PCO Date: 6/25/2020
 Work Type: Price / Do Not Proceed
 Days Valid: 5

Return To Kyle Kroh
 Byers Glass & Mirror, Inc.
 11685 Kaw Dr
 PO Box 291
 Bonner Springs, KS 66012
 913-441-8717
 913-915-2773
 kyle@byersglass.com

Scope Of Work / Time Extension Request

Per detail A5/A545 at Room 214, plan does not show a speaker hole. Per returned submittal speak thru has been added. Material has been ordered. Will need change order to proceed with work.

Details

Description	Cost / Rate	Qty / Hrs	Workers	Ext
Install Speakers	\$80.00	1.00 <i>Hrs</i>	1.00	\$80.00
(2) N666 Speakers	\$262.17	2.00 <i>EACH</i>	-	\$524.34
(2) 5" holes in 1/2" Glass	\$75.00	2.00 <i>EACH</i>	-	\$150.00

Breakout

Labor :	\$80.00
Overhead Percent @ 10%:	\$8.00
Material :	\$674.34
Overhead Percent @ 10%:	\$67.43
Total:	\$829.77

Reservation of Rights

This COR does not include any amount for impacts such as interference, disruptions, rescheduling, changes in the sequence of work, delays and/or associated acceleration. We expressly reserve the right to submit our request for any of these items.

Signed By: _____

Dated: 6/25/2020