



1701 SW 41 Street
Topeka, KS 66609
Ph : (785) 266-4222

Kansas City Office:
14955 W. 117th St.
Olathe, KS 66062
Ph: (913) 422-5300

Manhattan Office:
555 Poyntz, Ste. 250
Manhattan, KS 66503
Ph: (785) 340-3918

Change Request

To: DANA GOULD
SFS ARCHITECTURE
1150 GRAND BLVD
SUITE 400
KANSAS CITY, MO 64106
Ph: (816)474-1397 Fax: (816)421-8024

Number: 106
Date: 6/24/20
Job: 19050 Bonner Springs Govt Services
Phone:

Description: RFI 222 Police Facility: Light Fixtures at Underneath Side of Benches

We are pleased to offer the following specifications and pricing to make the following changes:
Furnish and Install 4 additional university benches

Description	Labor	Material	Equipment	Subcontract	Other	Price
PRECAST CONCRETE		\$3,647.62				\$3,647.62
PRECAST CONCRETE	\$1,088.00					\$1,088.00
					Subtotal:	\$4,735.62
			Bond	\$4,735.62	1.00%	\$47.36
			KBS Sub Fee			\$0.00
			KBS General Fee	\$4,735.62	10.00%	\$473.56
					Total:	\$5,256.54

ACCEPTED

If you have any questions, please contact me at 785-266-4222.

Submitted by: DENNIS TANNER
KBS CONSTRUCTORS, INC.

Reviewed by: Dana Gould, SFS ARchitecture
Date: July 8, 2020



1701 SW 41 Street
 Topeka, KS 66609
 Ph : (785) 266-4222
 Kansas City Office:
 14955 W. 117th St.
 Olathe, KS 66062
 Ph: (913) 422-5300

RFI

To: DAVID FOLSOM
 SFS ARCHITECTURE
 1150 GRAND BLVD
 SUITE 400
 KANSAS CITY, MO 64106
 Ph: (816)474-1397 Fax: (816)421-8024

RFI #: 222
Date: 5/7/2020
Job: 19050 Bonner Springs Govt Services
Phone:

CC: DANA GOULD (SFS ARCHITECTURE)

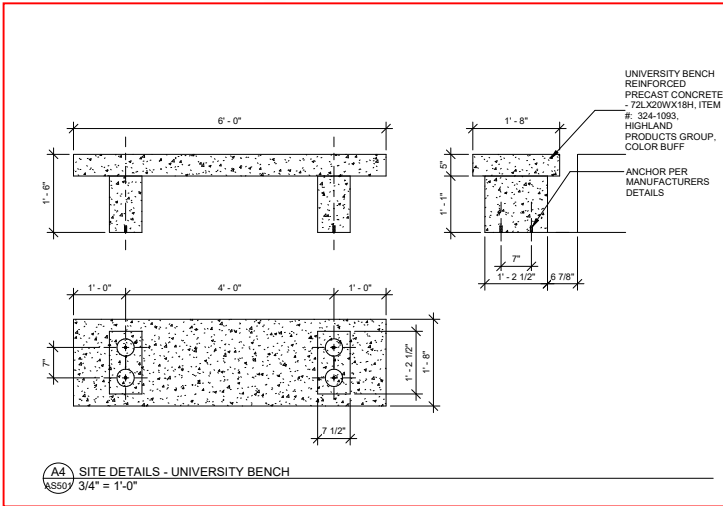
Subject: Police Facility: Light Fixtures at Underneath Side of Benches

Drawing: E102
Cost Impact: None

Spec Section:
Schedule Impact: None

Request:	Date Required:
Sheet E102 note 8 references installation of (4) F6-3 fixtures to be mounted to underside of benches along retaining wall 6.	
We can not find any reference to these benches anywhere else in the plans. Please provide additional information on the benches or mounting details for the fixtures.	
Requested by: TODD MANSON KBS CONSTRUCTORS, INC.	

Response:
<p>These four benches are the same as the bench outside the memorial garden and were placed outside the training room on that patio. They are not identified on the site plan. They are visible in the Electrical plans locating the lighting per the drawing attached.</p> <p>The specific bench is called out in A4/A501. I have attached the website used to identify the bench.</p> <p>The lighting is to be mounted per detail 4 on E501. You will need to drill into the bench to get the clips or channel in place for mounting. Use aluminum channel for mounting.</p> <p>See details attached. Dave Folsom, SFS, 5-8-20</p>
Answered by _____
Company _____ Date _____



University Bench Reinforced Precast Concrete - 72Lx20Wx18H

\$526.00 / each ~~\$852.00~~ (Save 38%) Item # 324-1093

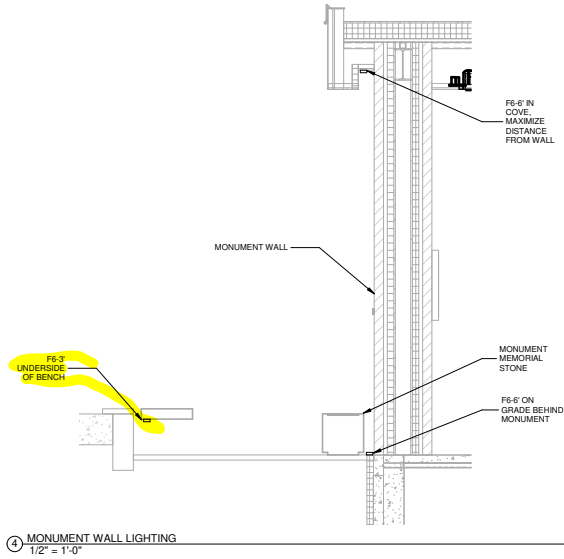
Buy 3 for \$515.48 each and save 2%
Buy 5 for \$504.97 each and save 4%
Buy 11 for \$494.44 each and save 6%

Color *

ADD TO CART

[Estimate Shipping](#)

Share item:

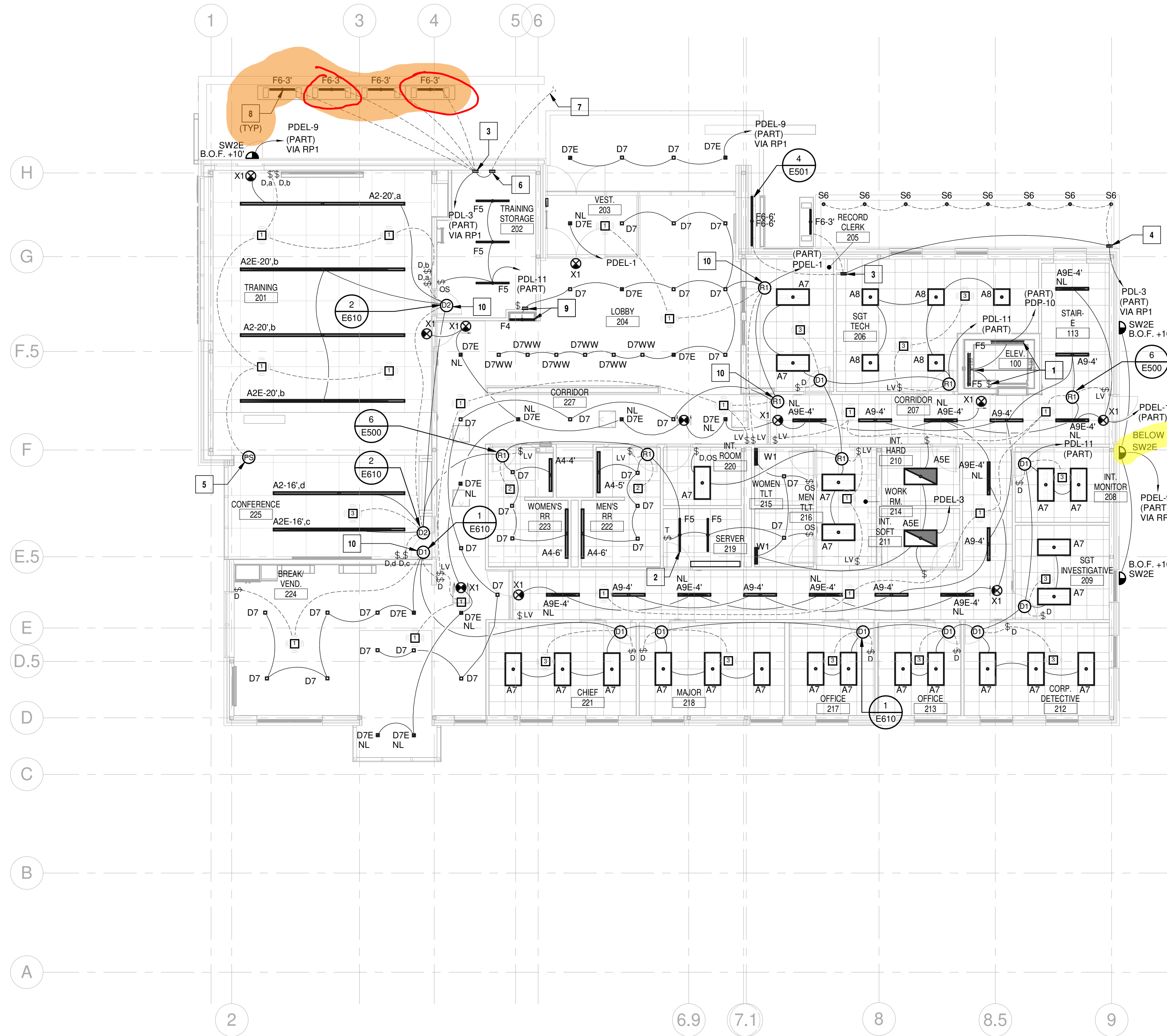


D

C

B

A



1 LIGHTING ADMINISTRATION LEVEL RCP
 1/8" = 1'-0"

GENERAL NEW NOTES:

1. REFER TO SHEET E101.

ELECTRICAL PLAN NOTES

- PROVIDE LIGHT INSTALLED AT TOP OF SHAFT. PROVIDE SPST LIGHT SWITCH ADJACENT TO PIT LADDER WITHIN REACH OF THE PIT ACCESS DOOR. ALL WORK WITHIN ELEVATOR SHAFT SHALL BE COORDINATED WITH ELEVATOR MANUFACTURER PRIOR TO PURCHASE AND ROUGH-IN. LIGHTING SHALL BE INSTALLED TO PROVIDE MINIMUM 19 FOOTCANDLES AT TOP OF SHAFT.
- COORDINATE LIGHT FIXTURE LOCATIONS IN THIS ROOM WITH DIVISIONS 27, 28, AND WITH OWNER PRIOR TO ROUGH-IN. ENSURE THAT FINAL FIXTURE LOCATIONS ARE NOT ABOVE ANY EQUIPMENT RACKS OR CABLE TRAY AND ARE ACCESSIBLE FROM BELOW.
- PROPOSED LOCATION FOR REMOTE TRANSFORMER FOR TYPE F6 TAPE LIGHT AT BENCHES. MOUNT AS HIGH AS POSSIBLE ON WALL OR ABOVE CEILING. PROVIDE INDIVIDUAL CONDUIT RUN AND 24V WIRE SIZED TO LIMIT VOLTAGE DROP TO 5% TO EACH F6 FIXTURE. REFER TO LIGHTING FIXTURE SCHEDULE FOR ADDITIONAL INFORMATION.
- PROPOSED LOCATION FOR REMOTE TRANSFORMER FOR TYPE S6 PIPE-MOUNT FIXTURES. MOUNT IN LANDSCAPING BED ABOVE SOIL LEVEL. PROVIDE 12V WIRING FROM TRANSFORMER TO FIXTURES WITHIN LANDSCAPING BED. SIZED TO LIMIT VOLTAGE DROP TO 5%.
- PROVIDE PARTITION SENSOR TO MONITOR STATUS OF OPERABLE PARTITION. WHEN PARTITION IS CLOSED, ROOMS ON EITHER SIDE OF PARTITION SHALL OPERATE AS INDIVIDUAL ROOMS. WHEN OPEN, ROOMS SHALL OPERATE AS ONE ROOM WITH RESPECT TO SENSORS, MANUAL CONTROLS, AND ZONING.
- PROPOSED LOCATION FOR REMOTE DRIVER FOR TYPE S8 FIXTURE IN CUSTOM BOLLARDS. PROVIDE CONDUIT AND 3V WIRE SIZED TO LIMIT VOLTAGE DROP TO 5%. REFER TO LIGHTING FIXTURE SCHEDULE FOR ADDITIONAL INFORMATION. ALL CONDUIT TO BE CONCEALED.
- REFER TO SITE PLAN FOR CONTINUATION.
- LOCATE F6-3 FIXTURE AT BACK OF UNDERSIDE OF BENCH. PROVIDE 24V LOW VOLTAGE CONNECTION BACK TO REMOTE TRANSFORMER FROM EACH F6 FIXTURE. CONFIRM FINAL BENCH SPECIFICATIONS FOR EXACT REQUIRED FIXTURE LENGTH PRIOR TO ORDER.
- PROVIDE F4 FIXTURE ACROSS TOP OF DISPLAY CASE MOUNTED WITHIN RAISED COMPARTMENT. FIELD CUT ASSEMBLY COMPONENTS TO FIT WIDTH OF CASE. REFER TO ARCHITECTURAL SECTION DETAILS FOR ADDITIONAL INFORMATION. LOCATE REMOTE TRANSFORMER BELOW STRUCTURE ON WALL INSIDE TRAINING STORAGE ROOM. PROVIDE 24V WIRING CONNECTION FROM TRANSFORMER TO FIXTURE. REFER TO D3/A125 FOR ADDITIONAL INFORMATION.
- LOCATE ROOM CONTROLLER IN ADJACENT SPACE, ABOVE ACCESSIBLE CEILING OR HIGH ON WALL IF SPACE IS EXPOSED TO STRUCTURE.



185002088
 KS. CORPORATE NO. E-325
 EXPIRES 12/31/2020



Feb 21 2019

**BONNER SPRINGS GOVERNMENT SERVICES CENTER
 -POLICE FACILITY**

CITY OF BONNER SPRINGS, KANSAS
 200 E 3RD ST.
 BONNER SPRINGS, KS 66012

MAR	DATE	DESCRIPTION

SFS PROJECT NO: 17973
 ISSUED FOR: BID DOCUMENTS
 ISSUE DATE: 02 / 22 / 2019
 © 2018 SFS ARCHITECTURE
**LIGHTING
 ADMINISTRATION
 LEVEL RCP**

E102



Description

Material

Carpenter Labor Hrs

RFI 222

Install University Bench (4)

16 \$ 68.00 \$ 1,088.00

\$ - \$ 1,088.00



(<https://www.theparkcatalog.com/>)

The Park Catalog
 220 Congress Park Drive, Suite 215
 Delray Beach FL 33445
 5616207878
sales@theparkcatalog.com

Shopping Cart

PRODUCT NAME	UNIT PRICE	QTY	SUBTOTAL
<u>University Bench Reinforced Precast Concrete - 72Lx20Wx18H</u> ITEM # 324-1093-1808435 Color : Weatherstone Buff	\$515.48	4	\$2,061.92

	Subtotal	\$2,061.92
	Shipping & Handling (Shipping & Handling - Freight)	\$1,585.70
	Grand Total	\$3,647.62

© 2019 The Park Catalog. All Rights Reserved.
<https://www.theparkcatalog.com/>

Need Help? Chat with a representative now.